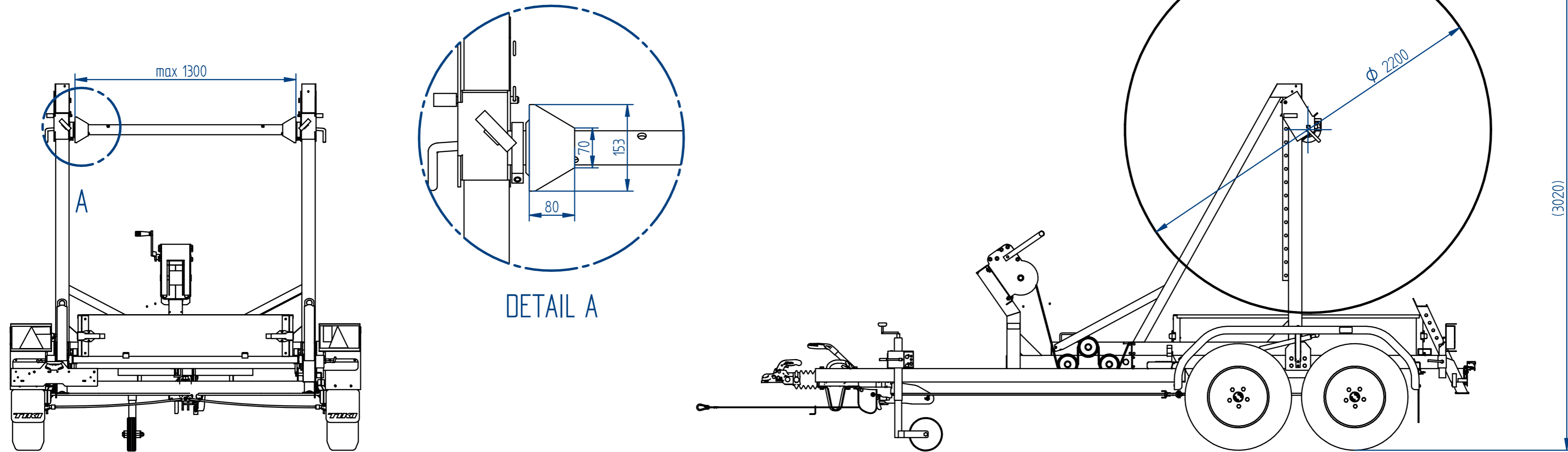


1. Minimum and maximum dimensions of the cable reel: Cable reel types 9F - K24

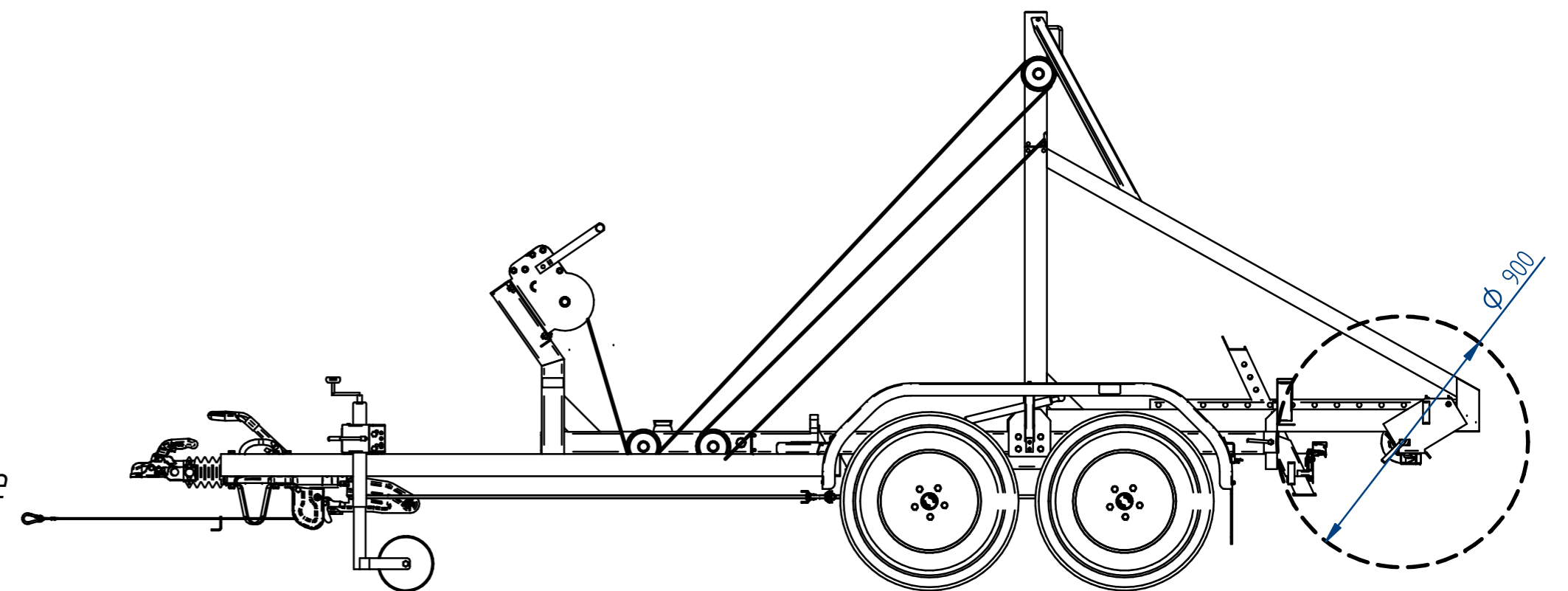


1.1. The maximum width of the cable reel is 1300 mm if reels centre bore is 150 mm.

Depending on the centre bore diameter the maximum width dimension is reduced according to enlargement A. NB! The enlargement shows only the left side cone, however the dimension is reduced both on the left and right sides!

1.2. In cases where the cargo box remains fastened to the trailer, the maximum diameter of the cable reel is 2200 mm. If the box is removed from the trailer, it is possible to winch onto the trailer and transport a cable reel with a diameter of up to 2400 mm.

1.3. The minimum diameter of the cable reel is 900mm due to the tilting properties of the cable trailer reel frame. Cable reels with smaller diameters should be lifted to the shaft pockets.



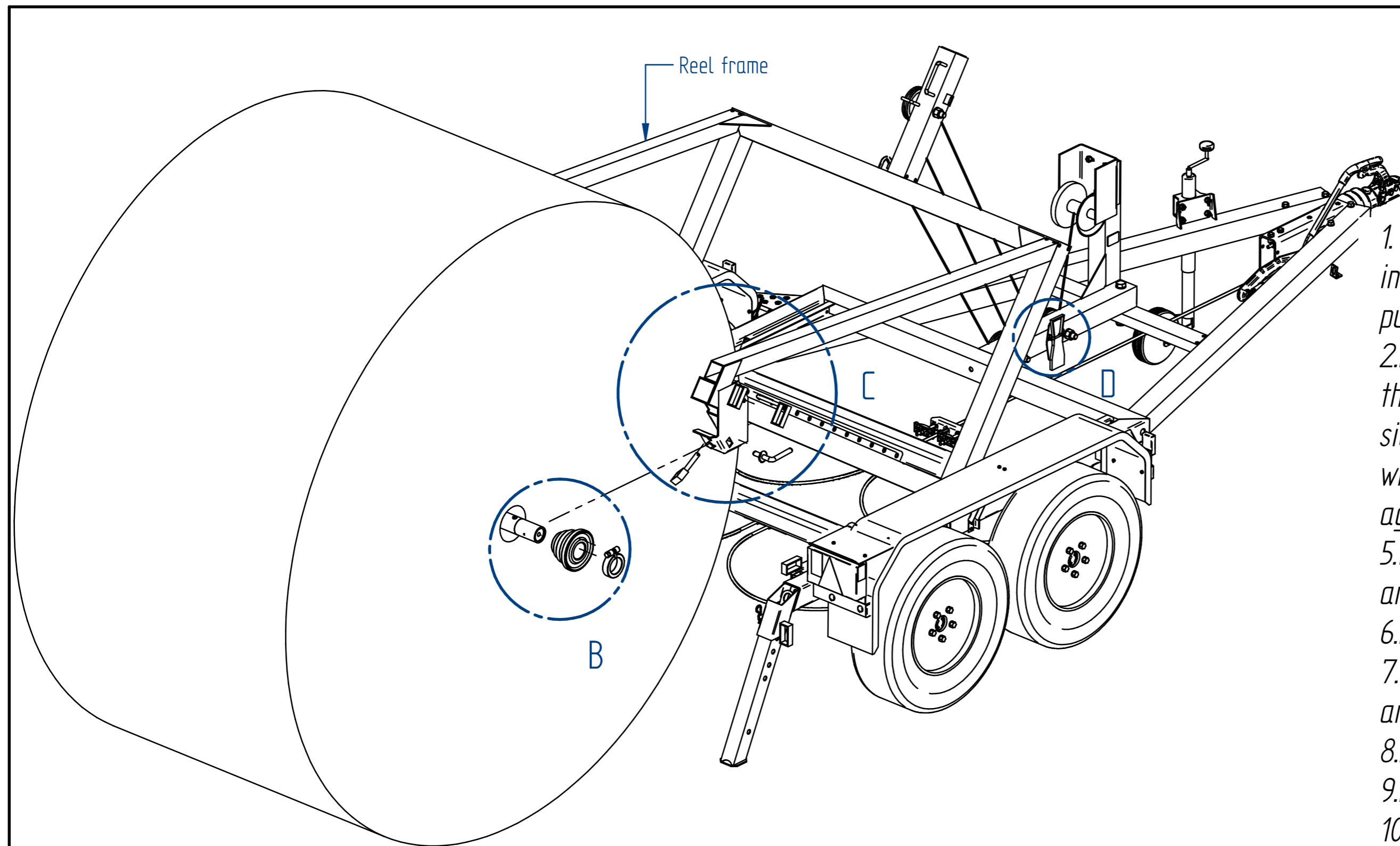
14. Cable trailer bearing capacities:

- KP-1500 together with cargo box is capable of bearing a cable reel of 1091 kg.
- KP-2600 together with cargo box is capable of bearing a cable reel of 2187 kg.
- KP-3500 together with cargo box is capable of bearing a cable reel of 2840kg.

	Materjal:	Märkimata piirhälbed: ISO 2768 - mk	Mass: 466 kg	Mööf: 120
	Teostas Kontrollis Kinnitas	M.Talvik O.Rei	Nimetus: KP1500-RB / KP2600-DRB / KP3500-DRB User manual	
Leht: 1/3		Detaili kood:		Versioon: 3

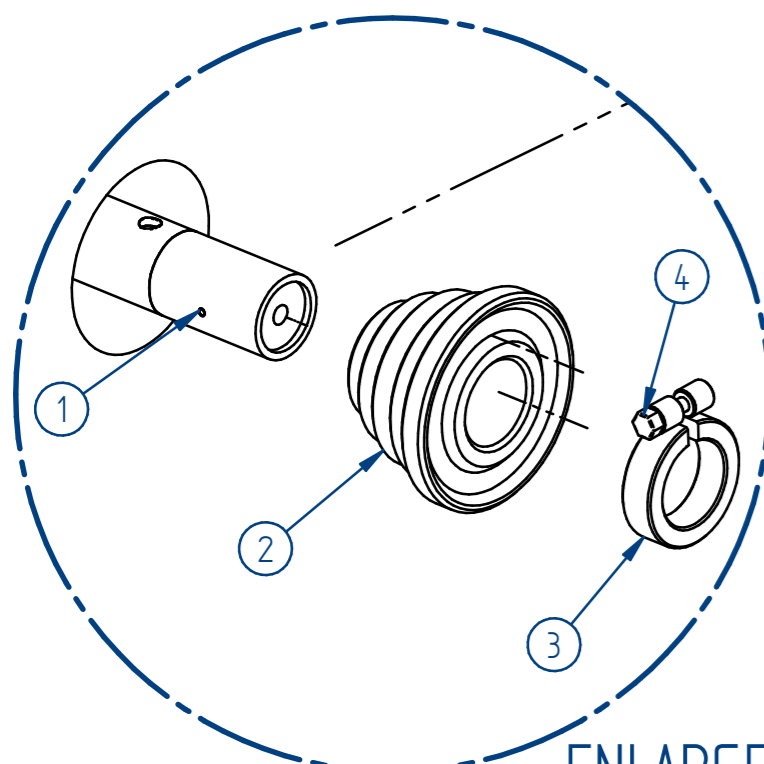
NB! Joonis on ainult ametialaseks kasutamiseks!
NB! Joonis on printitud formaadist A2 formaati A3!

Bestnet AS, Rae 4, Paldiski, Lääne-Harju vald, Estonia, 76805
+372 6762 064 tiki@tiki.ee www.tikirealer.com

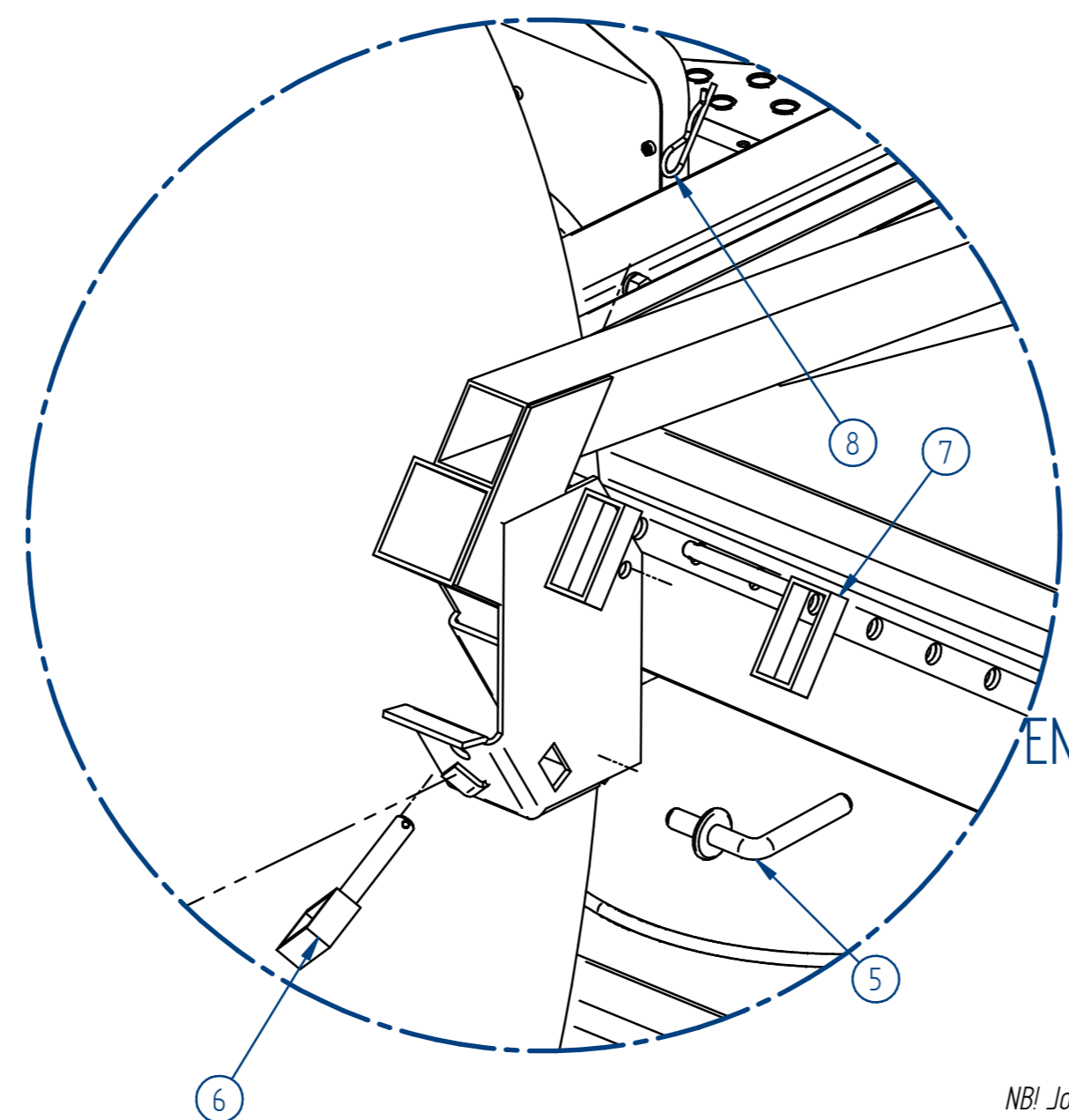


2. Winching of the cable reel to the trailer

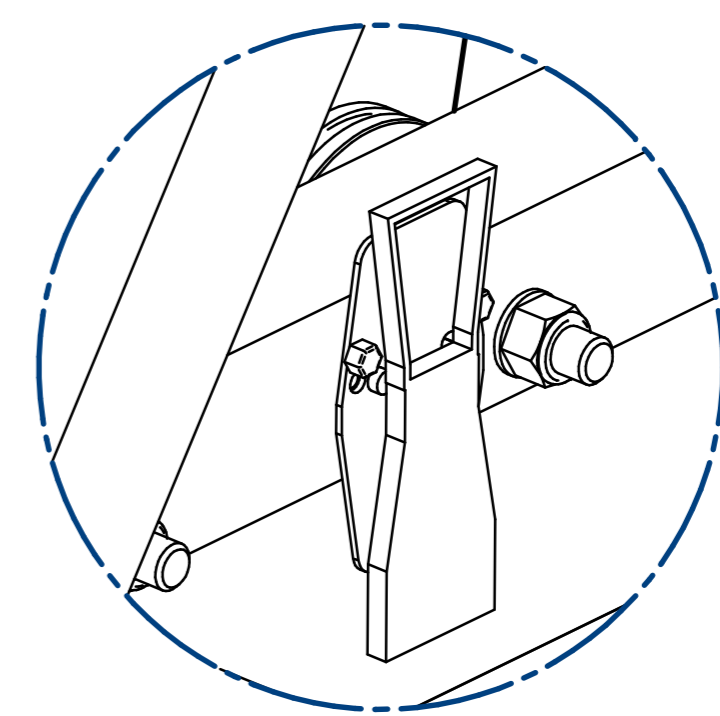
1. Lower the reel frame of the cable trailer onto the reel under a suitable inclination, and place the shaft pockets into a swinging position. For this purpose, remove cotter pins (pos. 8) as well as lower pins (pos. 7).
2. Place the shaft of the cable trailer (pos. 1) through the centre hole of the cable reel. NB! Make sure that the shaft protrudes equally from both side of the reel! Place cones (pos. 2) on the shaft ends. NB! The cones will be pressed tightly against the cable reel! Place the cone locks (pos. 3) against the cones, and tighten the locking bolts (pos. 4).
5. Install the cable reel together with the shaft between the shaft pockets and fix with pins (pos. 6).
6. Pull on the brake and adjust the rear mounting feet against the ground.
7. Winch the reel frame of the cable trailer back to a horizontal position and fix with a stopper. See the magnification D.
8. Fix the shaft pockets with pins (pos. 7) and cotter pins (pos. 8).
9. Fix the shaft with lock pins (pos. 5).
10. Set the mounting feet into the transport position and release the trailer brake.



ENLARGEMENT B
1:5



ENLARGEMENT C
1:5



ENLARGEMENT D
1:3

NB! The locking bolts will be released when the cable starts to unspool from the reel! (pos. 5).

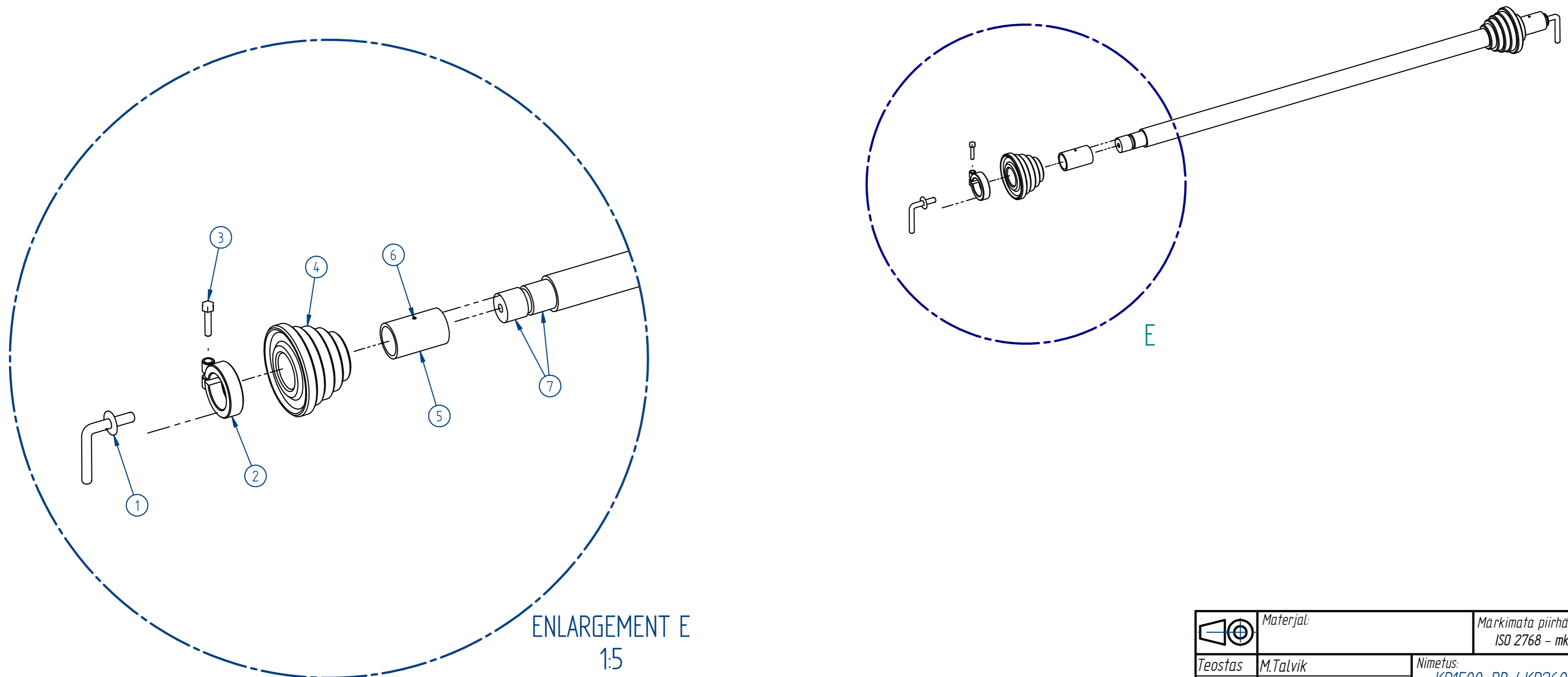
NB! Joonis on ainult ametialaseks kasutamiseks!
NB! Joonis on printitud formaadist A2 formaati A3!

	Materjal:	Märkimata piirhälbed: ISO 2768 - mk	Mass: 466 kg	Mõõt: 120
Teostas	M.Talvik	Nimetus: KP1500-RB / KP2600-DRB / KP3500-DRB		
Kontrollis		User manual		
Kinnitas	O.Rei	27.02.2024		
Leht: 2/3		Detaili kood:		Versioon: 3
TIKI <small>Bestnet AS, Rae 4, Paldiski, Lääne-Harju vald, Estonia, 76805 +372 6762 064 tiki@tiki.ee www.tikiireler.com</small>				

3.Cable trailer shaft maintenance instructions

The shaft of the cable trailer should be serviced every 300 operating hours. During the service, the turning parts at the end of the shaft should be lubricated. For this purpose:

- 1.Remove the end locking bolts (pos. 1).
- 2.Remove the cone locks (pos. 2). To this end, release the bolts (pos. 3). Remove the cones (pos. 4).
- 3.Release inner hexagonal bolts M6 (pos. 6) and remove bushings (pos. 5).
- 4.Clean all moving parts from dirt and old grease.
- 5.Check visually all assembly parts for straightness, state of wear as well as for the presence of cracks. If problems appear, replace the corresponding part immediately.
- 6.Lubricate the exposed surfaces with an even layer of grease (pos. 7). Use a heavy grease designed for tough conditions.
- 7.Assemble the shaft. During assembly, lubricate the bolts (pos. 1, pos. 6 and pos. 3).



ENLARGEMENT E
1:5

	Materjal:	Märkimata piirhälbed: ISO 2768 - mk	Mass: 466 kg	Mõõt: 1:1
Teostas	M.Talvik	Nimetus: KP1500-RB / KP2600-DRB / KP3500-DRB		
Kontrollis		User manual		
Kinnitas	O.Rei	27.02.2024	Leht: 3/3	Detaili kood:
		Leht: 3/3	Detaili kood:	Versioon: 3
<small>Bestnet AS, Rae 4, Paldiski, Lääne-Harju vald, Estonia, 76805 +372 6782 064 tiki@tiki.ee www.tikirealer.com</small>				

NB! Joonis on ainult ametialaseks kasutamiseks!
NB! Joonis on printitud formaadist A2 formaati A3!